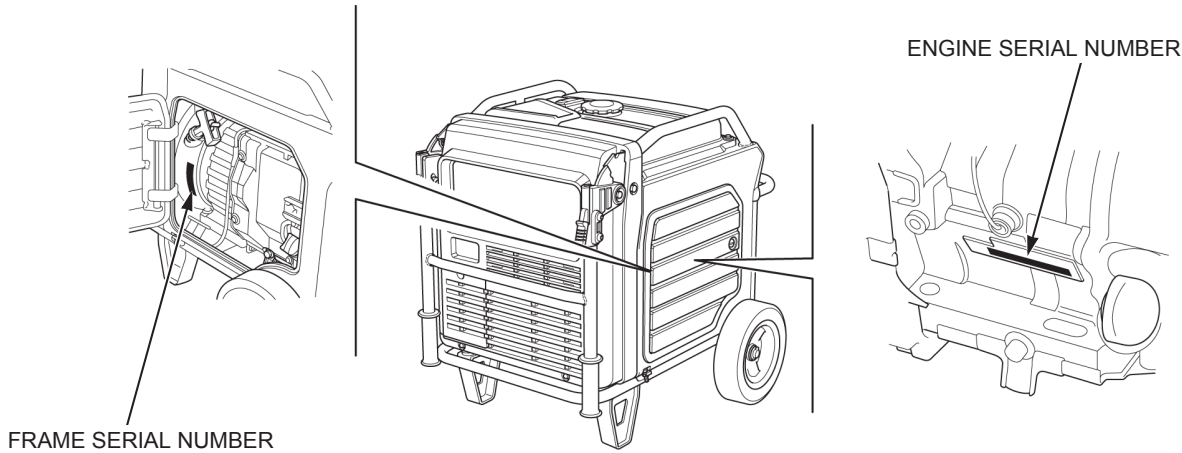


SPECIFICATIONS

SERIAL NUMBER LOCATION

The engine serial number is located on the cylinder block on the starter grip side of this unit, and the frame serial number is located on the front frame on the starter grip side of this unit. Refer to them when ordering parts or making technical inquiries.



SPECIFICATIONS

DIMENSIONS AND WEIGHTS

Model	EU70is
Type	GT, GWT, FT, ITT, RGT, UT, SKT, RT, RAT
Description code	EEJD
Overall length	1,198 mm (47.2 in)
Overall width	700 mm (27.6 in)
Overall height	721 mm (28.4 in)
Dry weight	118.1 kg (260.4 lbs)
Operating weight	132.2 kg (291.5 lbs)

ENGINE

Engine model	GX390T2
Description code	GCAGD
Type	4 stroke, overhead valve, single cylinder, inclined by 25°
Displacement	389 cm ³ (23.7 cu-in)
Bore x stroke	88 x 64 mm (3.5 x 2.5 in)
Compression ratio	8.2: 1
Cooling system	Forced air
Ignition system	Full Transistorized ignition
Ignition timing	20° B.T.D.C. / 3,300 min ⁻¹ (rpm) (No load)
Spark plug	BPR6ES (NGK)
Fuel system	Electronically controlled fuel injection
Air cleaner	Dual type
Governor	Electric system
Lubrication system	Forced spray system
Oil capacity	1.1 Liter (1.16 US qt, 0.97 Imp qt)
Recommended oil	SAE 10W-30 API service classification SE or higher
Starting system	Recoil and electric starter
Stopping system	Ignition primary circuit open
Recommended fuel	Unleaded gasoline with a pump octane rating 89 or higher and an ethanol content of no more than 10% and methanol content of no more than 5%

GENERATOR

Model	EU70is			
Description code	EEJD			
Type	GT, GWT, FT, ITT, RGT	UT	SKT	RT, RAT
Generator type	Multi-electrode field rotation type			
Generator structure	Self-ventilation, drip-proof type			
Excitation	Self-excitation			
Voltage regulation system	PWM (Pulse width modulation)			
Phase	Single phase			
Rated output	5.5 kVA			
Rated frequency	50 Hz		60 Hz	50 Hz
Rated voltage	230 V	240 V	220 V	
Rated current	23.9 A	22.9 A	25.0 A	
Power factor	1.0 Cos θ			

CHARACTERISTICS

Model	EU70is			
Type	GT, GWT, FT, ITT,	RGT	UT	SKT, RT, RAT
Voltage variation rate	Momentary	10% max.		
	Average	6% max.		
	Average time	3 sec. max.		
Voltage stability	Within $\pm 1\%$			
Frequency variation rate	Momentary	1% max.		
	Average	1% max.		
	Average time	3 sec. max.		
Frequency stability	Within ± 0.3 Hz			
Insulation resistance	10 M Ω min.			
AC circuit protector	33.5 A		35.0 A	
Insulation type	F		E	
Rated rpm	2,400 – 3600 min ⁻¹ (rpm) 3,300 – 3,600 min ⁻¹ (rpm) *1			
Fuel tank capacity	19.2 Liters (5.07 US gal, 4.22 Imp gal)			
Fuel consumption	2.95 Liters (0.78 US gal, 0.65 Imp gal)/Hr.			
Max. operating hours at rated load without refueling	Approx. 6.5 Hr.			
Sound power level (L _{WA}) at rated load	-		L _{WA} 90	
Measured sound power level (2000/14/EC, 2005/88/EC)	88 dB(A)		-	
	Uncertainty		2 dB(A)	
Guaranteed sound power level (2000/14/EC, 2005/88/EC)	90 dB(A)		-	

*1: At Eco-Throttle™ OFF